

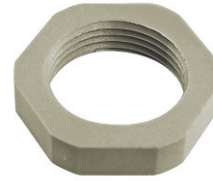
Locknuts *Polyamide / Stainless Steel*

Material:

- Polyamide 6
- 25 % glass fiber reinforced

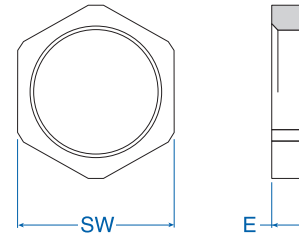
Characteristic feature:

- PG / metric and NPT thread



Temperature Range
-40 to 100°C
(-40 to 212°F)

Thread	Thickness (E) mm	SW mm	Cat. No. Light grey	Cat. No. Black	Std. Pk.
PG (once according to DIN 46 320)					
PG 7	5	19	7211 881	7211 851	50
PG 9	5	22	7211 882	7211 852	50
PG 11	5	24	7211 883	7211 853	50
PG 13.5	6	27	7211 884	7211 854	50
PG 16	6	30	7211 885	7211 855	50
PG 21	6.5	36	7211 886	7211 856	20
PG 29	7.5	46	7211 887	7211 857	20
PG 36*	8	60	7211 888	7211 858	10
PG 42*	9	65	7211 889	7211 859	5
PG 48*	9.5	70	7211 890	7211 860	5
Metric					
M 12 x 1.5	5	19	7211 979	7211 974	50
M 16 x 1.5	5	22	7211 980	7211 975	50
M 20 x 1.5	5	24	7211 981	7211 976	50
M 25 x 1.5	6	30	7211 982	7211 977	50
M 32 x 1.5	7.5	38	7211 983	7211 978	50
M 40 x 1.5	8	50	7211 984	7211 990	20
M 50 x 1.5*	9	60	7211 985	7211 991	10
M 63 x 1.5*	10	75	7211 986	7211 992	5
NPT					
NPT 3/8"	5	22	7211 485	7211 495	50
NPT 1/2"	6	27	7211 486	7211 496	50
NPT 3/4"	6.5	36	7211 487	7211 497	25
NPT 1"	7	41	7211 488	7211 498	20



* Not glass fiber reinforced

Material:

- Stainless Steel
- 1.4404 / INOX 316L

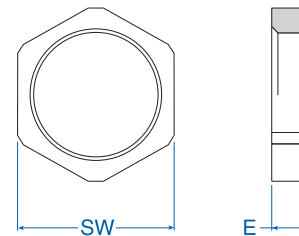
Characteristic feature:

- Metric thread



Stainless Steel

Thread	Thickness (E) mm	SW mm	Cat. No.	Std. Pk.
Metric				
M 12 x 1.5	3	15	6010112	50
M 16 x 1.5	3	19	6010116	50
M 20 x 1.5	3.5	24	6010120	50
M 25 x 1.5	3.5	30	6010125	25
M 32 x 1.5	4.5	35	6010132	20
M 40 x 1.5	4.5	45	6010140	10
M 50 x 1.5	5.5	55	6010150	10
M 63 x 1.5	6	70	6010163	5



This is one of our most popular series and is usually kept in stock.