

# Cable Gland ATEX - Polyamide

## Material:

- Body: Polyamide PA 6  
25 % Glass fiber Reinforced
- Seal: Neoprene
- ECA clamping ring: Polycarbonate

## Characteristics:

- PG/Metric thread
- Extended thread available
- Strain relief through clamping ring

## Applications:

- For explosion endangered areas according to EN 50014 and EN 50019
- Machines and devices
- Measuring and control engineering
- Plant installations

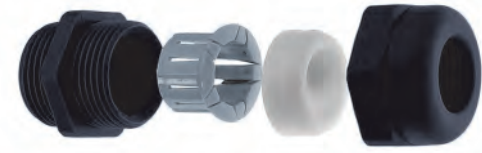
### Temperature Range

-20 to 55°C  
(-4 to 131°F)

## ECA Clamping Ring (Punch-out Seal)

Outer thread	Clamping range mm	Cat. No. Black	Std. Pk.
<b>PG</b>			
PG 9	3.5 - 8.5	5507050	50
PG 11	4.0 - 10.5	5507051	50
PG 13.5	5.0 - 12.5	5507052	50
PG 16	6.5 - 14.0	5507053	50
PG 21	8.0 - 18.5	5507054	20
PG 29	10.0 - 25.0	5507055	20
<b>Metric</b>			
M 16 x 1.5	3.5 - 8.5	5507250	50
M 20 x 1.5/13	5.0 - 12.5	5507251	50
M 20 x 1.5/16	6.5 - 14.0	5507252	50
M 25 x 1.5	8.0 - 18.5	5507253	20
M 32 x 1.5	10.0 - 25.0	5507254	20

Thread Size	Dimensions					
	H mm	E mm	L mm	ØC mm	ØP mm	ØPG/M mm
PG9	19	8	32	8.5	9.0	15.2
PG11	22	8	35	11.5	11.0	18.6
PG13.5	24	9	36	12.5	13.5	20.4
PG16	27	10	40	14.5	15.0	22.5
PG21	33	11	44	18.5	19.0	28.3
PG29	42	12	55	25.0	25.0	37.0
M 16x1.5	19	8	32	8.5	9.0	16.0
M 20x1.5/13	24	9	36	12.5	13.5	20.0
M 20x1.5/16	27	9	39	14.5	15.0	20.0
M 25x1.5	33	11	44	18.5	19.0	25.0
M 32x1.5	42	12	55	25.0	25.0	32.0



Gland must be mounted with flat seal and locknut.

L.C.I.E. ATEX

PROTECTION  
**IP68**  
RATING

## ATEX Characteristics:

**Certificate:** LCIE 99 ATEX 6030X

**Type of protection:** Ex e

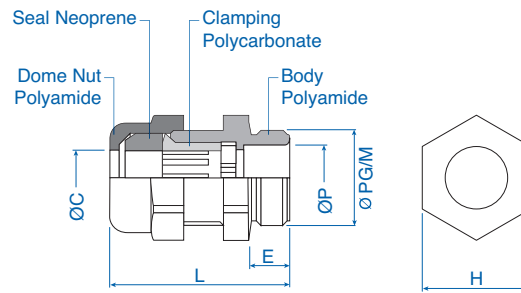
**Test Standards:** EN60079-0  
EN60079-7  
EN61241-0  
EN61241-1

**Device Group:** II

**Category:** 2 and 3

**Atmosphere:** G/D

**Zone:** 1 and 2 (21 and 22 with seal ring)



Locknuts and seal rings sold separately, see page 24 and 35.