

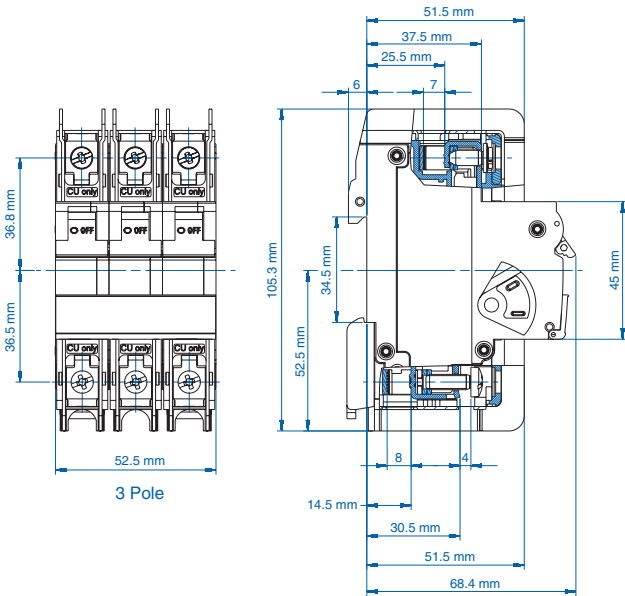


3 POLE
Standard Pack 4



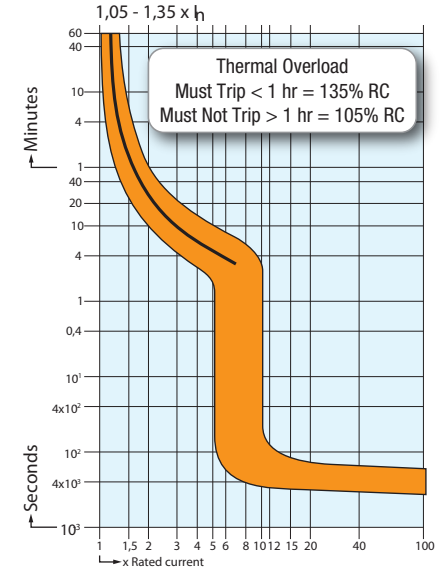
Rated Current (I _N)	Type/ Cat. No.
0.3A	3C03UL
0.5A	3C05UL
1.0A	3C1UL
1.6A	3C1.6UL
2.0A	3C2UL
3.0A	3C3UL
4.0A	3C4UL
5.0A	3C5UL
6.0A	3C6UL
8.0A	3C8UL
10A	3C10UL
12A	3C12UL
13A	3C13UL
15A	3C15UL
16A	3C16UL
20A	3C20UL
25A	3C25UL
30A	3C30UL
32A	3C32UL
40A	3C40UL
50A	3C50UL
60A	3C60UL
63A	3C63UL

Weight (per piece)
0.3A - 32A:
 0.408 - 0.429 kg
 0.899 - 0.946 lb
33A - 63A:
 0.426 - 0.489 kg
 0.939 - 1.078 lb



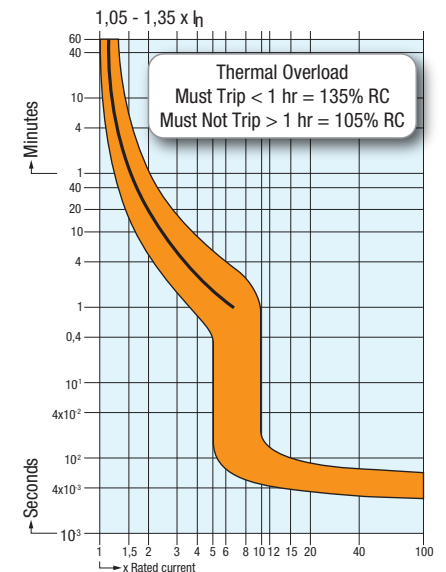
C Trip Characteristic

I_N = 0.3A - 10A rated current



C Trip Characteristic

I_N = 12A - 63A rated current



Specifications

Current/ Voltage Rating	0.3 - 63A/240V AC, 0.3-32A/480Y/277V AC
Calibration Temperature	40°C (104°F)
Ambient Temperature	-25°C to +70°C (-13°F to 158°F)
Storage Temperature	-40°C to +70°C (-40°F to 158°F)
Terminal Size Acceptability	Top: 18-3 AWG; Bottom: 18-2 AWG
Terminal Torque (min/max)	2 Nm (17.7 lb.in.) / 2.5Nm (22.2 lb.in)
Electrical Life	6,000 switching cycles ON/ OFF
Mechanical Life	10,000 switching cycles ON/ OFF
Vibration Resistance	> 15g according to DIN EN 60069-2-59 during a load with I ₁ = 1.05 x I _N
Resistance to mechanical shocks	25g @ 11ms
Degree of protection acc. IEC/EN 60529	IP20
Mounting Orientation	In any plane

Short Circuit Interrupting Capacity

Pole	Type	0.3-32A	40-63A
3	AC	10kA @ 240, 480Y/277V	10kA @ 240V