



**3 POLE**  
Standard Pack 4



Rated Current (In)	Type/ Cat. No.
0.5A	3C05UR
1.0A	3C1UR
2.0A	3C2UR
3.0A	3C3UR
4.0A	3C4UR
5.0A	3C5UR
6.0A	3C6UR
8.0A	3C8UR
10A	3C6UR
12A	3C12UR
13A	3C13UR
15A	3C15UR
16A	3C16UR
20A	3C20UR
25A	3C25UR
30A	3C30UR
32A	3C32UR
40A	3C40UR
50A	3C50UR
60A	3C60UR
63A	3C63UR

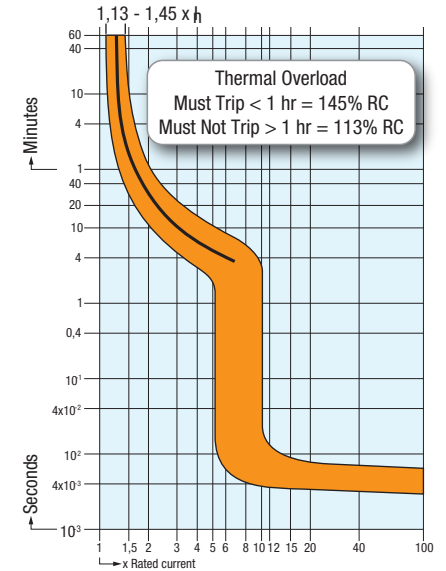
**Weight (per piece)**

**0.3A - 32A:**  
0.360 - 0.423 kg  
0.793 - 0.933 lb

**33A - 63A:**  
0.411 - 0.474 kg  
0.906 - 1.045 lb

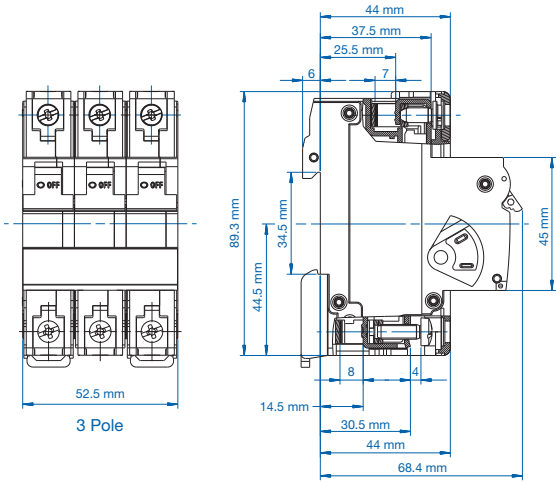
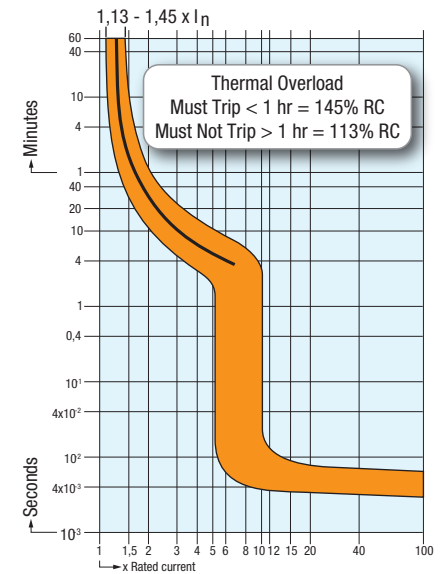
### C Trip Characteristic

$I_n = 0.3A - 10A$  rated current



### C Trip Characteristic

$I_n = 13A - 63A$  rated current



### Specifications

<b>Voltage Rating</b>	0.5-63A / 480Y/277V AC
<b>Short Circuit Withstand Rating</b>	0.5 - 10A (RC): 10 kA with no back-up fuse 12 - 63A (RC): 10 kA with UL-listed Class J back-up fuse; 5 kA with no back-up fuse
<b>Calibration Temperature</b>	30°C (86°F)
<b>Ambient Temperature</b>	-25°C to +70°C (-13°F to 158°F)
<b>Storage Temperature</b>	-40°C to +70°C (-40°F to 158°F)
<b>Terminal Torque (min/max)</b>	2 Nm (17.7 lb.in.) / 2.5Nm (22.2 lb.in)
<b>Electrical Life</b>	6,000 switching cycles ON/ OFF
<b>Mechanical Life</b>	10,000 switching cycles ON/ OFF
<b>Vibration Resistance</b>	> 15g according to DIN EN 60069-2-59 during a load with 1.05 x $I_n$
<b>Resistance to mechanical shocks</b>	25g @ 11ms
<b>Degree of protection acc. IEC/EN 60529</b>	IP20
<b>Mounting Orientation</b>	In any plane

### Short Circuit Withstand Ratings for DSL7 Supplementary Protector

Trip Curve	Amp Range	Backup Protection	
		UL-Listed Class J Fuse up to 10kA	No Backup Fuse Required up to:
all	0.5 - 10A	70A	10kA
all	12 - 63A	4xRC*	5kA

\*up to nearest rated current