



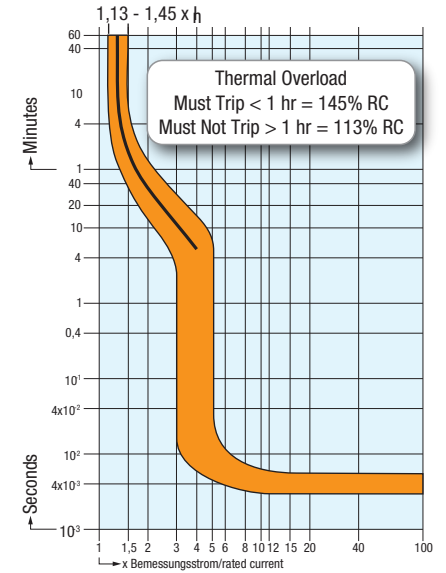
3 POLE
Standard Pack 4



Rated Current (I _n)	Type/ Cat. No.
0.5A	3B05UR
1.0A	3B1UR
2.0A	3B2UR
3.0A	3B3UR
4.0A	3B4UR
5.0A	3B5UR
6.0A	3B6UR
8.0A	3B8UR
10A	3B6UR
12A	3B12UR
13A	3B13UR
15A	3B15UR
16A	3B16UR
20A	3B20UR
25A	3B25UR
30A	3B30UR
32A	3B32UR
40A	3B40UR
50A	3B50UR
60A	3B60UR
63A	3B63UR

B Trip Characteristic

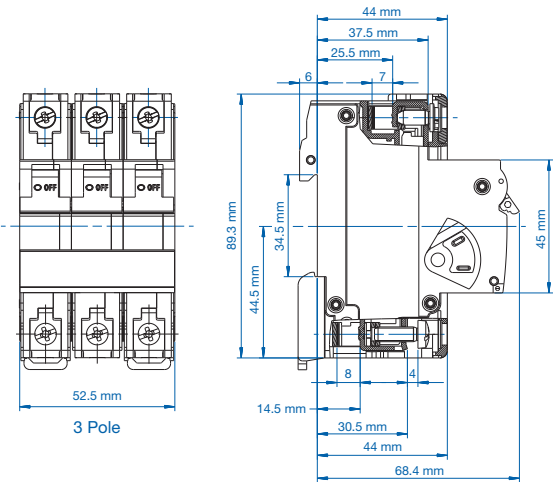
I_n = 0.3A - 10A rated current



Weight (per piece)

0.3A - 32A:
0.360 - 0.423 kg
0.793 - 0.933 lb

33A - 63A:
0.411 - 0.474 kg
0.906 - 1.045 lb



Specifications

Voltage Rating	0.5-63A / 480Y/277V AC
Short Circuit Withstand Rating	0.5 - 10A (RC): 10 kA with no back-up fuse 12 - 63A (RC): 10 kA with UL-listed Class J back-up fuse; 5 kA with no back-up fuse
Calibration Temperature	30°C (86°F)
Ambient Temperature	-25°C to +70°C (-13°F to 158°F)
Storage Temperature	-40°C to +70°C (-40°F to 158°F)
Terminal Torque (min/max)	2 Nm (17.7 lb.in.) / 2.5Nm (22.2 lb.in)
Electrical Life	6,000 switching cycles ON/ OFF
Mechanical Life	10,000 switching cycles ON/ OFF
Vibration Resistance	> 15g according to DIN EN 60069-2-59 during a load with 1.05 x I _n
Resistance to mechanical shocks	25g @ 11ms
Degree of protection acc. IEC/EN 60529	IP20
Mounting Orientation	In any plane

Short Circuit Withstand Ratings for DSL7 Supplementary Protector

Trip Curve	Amp Range	Backup Protection	
		UL-Listed Class J Fuse up to 10kA	No Backup Fuse Required up to:
all	0.5 - 10A	70A	10kA
all	12 - 63A	4xRC*	5kA

*up to nearest rated current

B Trip Characteristic

I_n = 13A - 63A rated current

