



2 POLE
Standard Pack 6



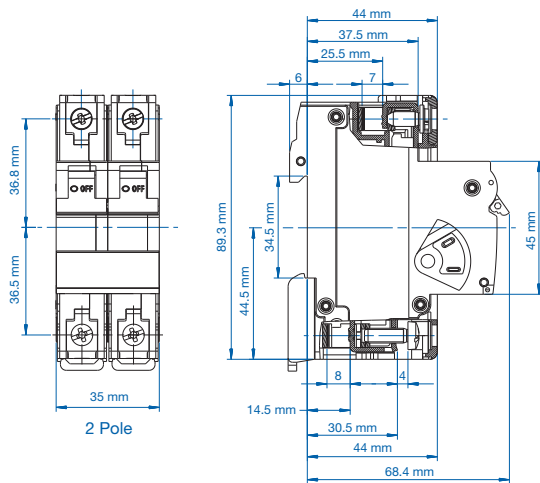
UL Recognized
E137915

Rated Current (I _n)	Type/ Cat. No.
0.5A	2C05UR
1.0A	2C1UR
2.0A	2C2UR
3.0A	2C3UR
4.0A	2C4UR
5.0A	2C5UR
6.0A	2C6UR
8.0A	2C8UR
10A	2C6UR
12A	2C12UR
13A	2C13UR
15A	2C15UR
16A	2C16UR
20A	2C20UR
25A	2C25UR
30A	2C30UR
32A	2C32UR
40A	2C40UR
50A	2C50UR
60A	2C60UR
63A	2C63UR

Weight (per piece)

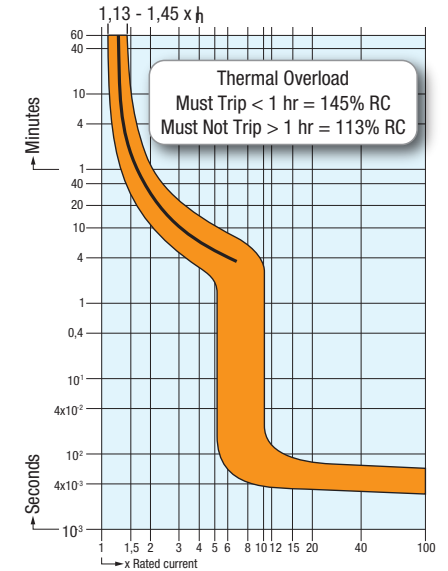
0.3A - 32A:
0.240 - 0.282 kg
0.529 - 0.622 lb

33A - 63A:
0.274 - 0.316 kg
0.604 - 0.697 lb



C Trip Characteristic

I_n = 0.3A - 10A rated current



Specifications

Voltage Rating	0.5-63A / 480Y/277V AC
Short Circuit Withstand Rating	0.5 - 10A (RC): 10 kA with no back-up fuse 12 - 63A (RC): 10 kA with UL-listed Class J back-up fuse; 5 kA with no back-up fuse
Calibration Temperature	30°C (86°F)
Ambient Temperature	-25°C to +70°C (-13°F to 158°F)
Storage Temperature	-40°C to +70°C (-40°F to 158°F)
Terminal Torque (min/max)	2 Nm (17.7 lb.in.) / 2.5Nm (22.2 lb.in)
Electrical Life	6,000 switching cycles ON/ OFF
Mechanical Life	10,000 switching cycles ON/ OFF
Vibration Resistance	> 15g according to DIN EN 60069-2-59 during a load with 1.05 x I _n
Resistance to mechanical shocks	25g @ 11ms
Degree of protection acc. IEC/EN 60529	IP20
Mounting Orientation	In any plane

Short Circuit Withstand Ratings for DSL7 Supplementary Protector

Trip Curve	Amp Range	Backup Protection	
		UL-Listed Class J Fuse up to 10kA	No Backup Fuse Required up to:
all	0.5 - 10A	70A	10kA
all	12 - 63A	4xRC*	5kA

*up to nearest rated current

C Trip Characteristic

I_n = 13A - 63A rated current

