

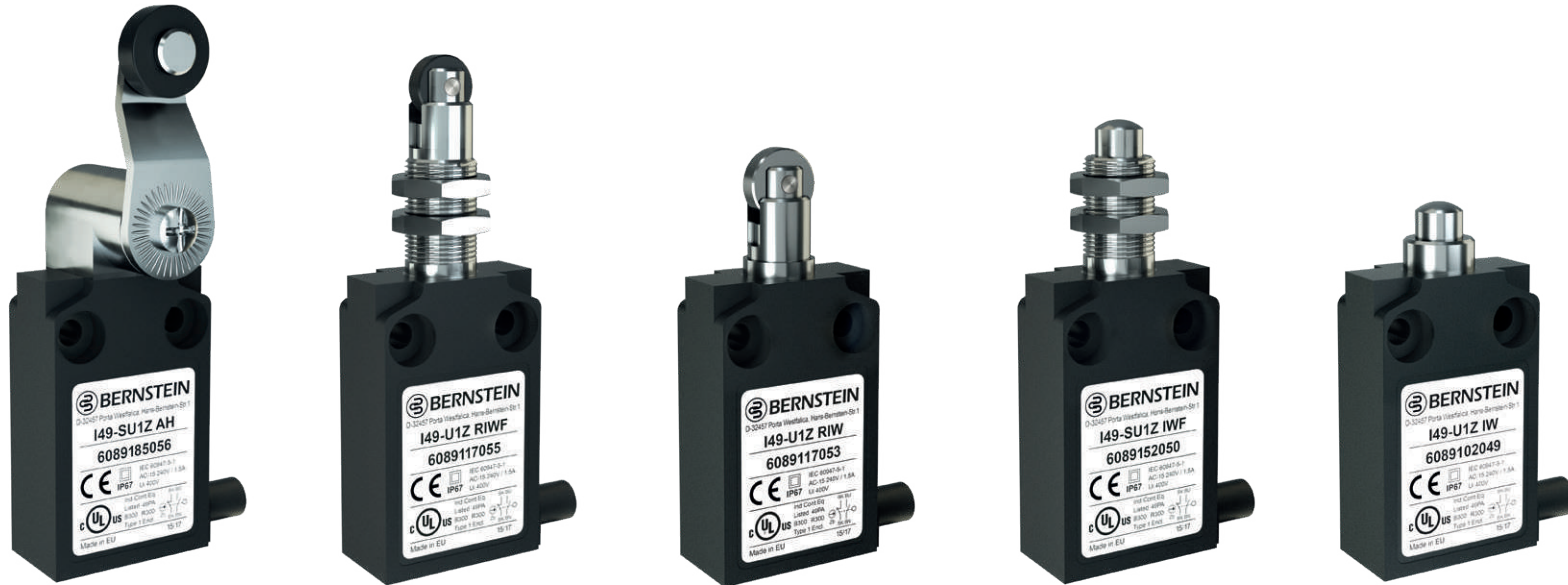
IN49 - Series

Small Encapsulated Body
Position & Limit Switches



Position & Limit Switches

I49 Series - Plastic Body



Product characteristics

- Flat and compact design
- Pre-installed connecting cable (1m length) for quick and easy installation
- Top-mounting versions available
- Cable outlet on the side or at the bottom
- High protection class IP67
- Suitable for safety applications according to DIN EN 60947-5-1 (positive break)

Good to know ...

Due to the space-saving enclosures and the high protection class IP67 the position switches of the I49 series are perfect for an installation where a flat design and a high protection class of IP67 is required. The switches are often used for the monitoring of covers and inspection doors, for position monitoring applications and similar applications. The high protection class allows outdoor applications.

Options

- Different cable lengths are available on request

Position & Limit Switches

I49 Series - Plastic Body

Technical design

- Slow- and snap action
- **Versions:** 1 NC/1 NO, 2 NC, 2 NC/2 NO

Technical data

Electrical data		
Design insulation voltage	U _i max.	400 V AC
Conventional thermoelectric current	I _{the}	10 A
Rated operating voltage	U _e max.	240 V
Utilisation category		AC-15; 24 V / 10 A; 240 V / 3 A
Protection class		II, protective insulation
Mechanical data		
Ambient temperature		-25 °C to +70 °C (connecting cable firmly wired)
Mechanical lifetime		10 x 10 ⁶ switching cycles
Switching frequency		≤ 60/min.
Type of connection		Cable 4 x 0.75 mm ²
Protection class		IP67 conforming to IEC/EN 60529
Standards		
VDE 0660 T100, DIN EN 60947-1, IEC 60947-1		
VDE 0660 T200, DIN EN 60947-5-1, IEC 60947-5-1		

Application examples

- Monitoring of safety gates, hatches or protective hoods
- Position monitoring of moving parts
- Object detection in conveying technology
- End position control of components
- Position monitoring on rolling doors
- Monitoring of sliding doors

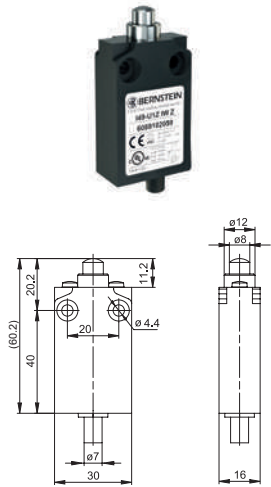


Position & Limit Switches

I49 Series - Plastic Body

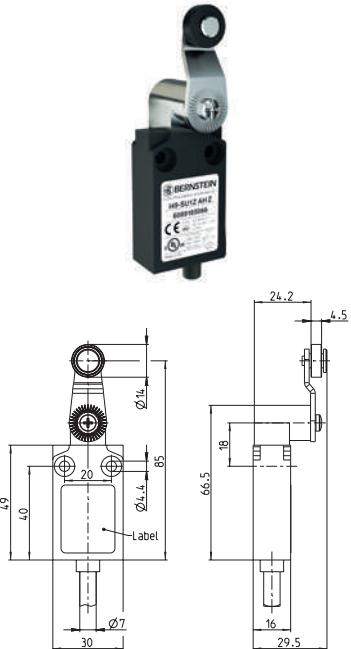


I49-... IW



	1 NC / 1 NO Snap-action	1 NC / 1 NO Slow-action	2 NC Slow-action	2 NC / 2 NO Slow-action
Switching diagram				
Cable outlet right	6089152048 I49-SU1Z IW	6089102049 I49-U1Z IW		
Cable outlet below	6089152058 I49-SU1Z IW Z	6089102059 I49-U1Z IW Z	6089802070 I49-A2Z IW Z	6089202075 I49-U2Z IW Z

I49-... AH



	1 NC / 1 NO Snap-action	1 NC / 1 NO Slow-action	2 NC Slow-action	2 NC / 2 NO Slow-action
Switching diagram				
Cable outlet right	6089185056 I49-SU1Z AH	6089135057 I49-U1Z AH		
Cable outlet below	6089185066 I49-SU1Z AH Z	6089135067 I49-U1Z AH Z	6089835073 I49-A2Z AH Z	6089235078 I49-U2Z AH Z

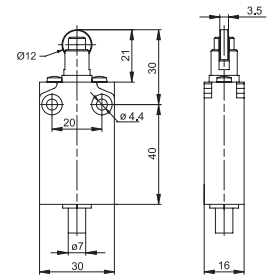
Position & Limit Switches

I49 Series - Plastic Body



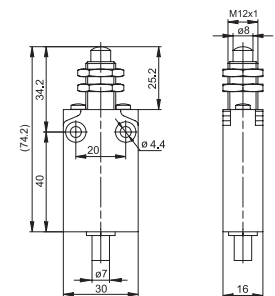
I49-... RIW

	1 NC / 1 NO Snap-action	1 NC / 1 NO Slow-action	2 NC Slow-action	2 NC / 2 NO Slow-action
Switching diagram				
Cable outlet right	6089167052 I49-SU1Z RIW	6089117053 I49-U1Z RIW		
Cable outlet below	6089167060 I49-SU1Z RIW Z	6089117061 I49-U1Z RIW Z	6089817071 I49-A2Z RIW Z	6089217076 I49-U2Z RIW Z



I49-... IWF

	1 NC / 1 NO Snap-action	1 NC / 1 NO Slow-action	2 NC Slow-action	2 NC / 2 NO Slow-action
Switching diagram				
Cable outlet right	6089152050 I49-SU1Z IWF	6089102051 I49-U1Z IWF		
Cable outlet below	6089152062 I49-SU1Z IWF Z	6089102063 I49-U1Z IWF Z	6089852069 I49-A2Z IWF Z	6089452074 I49-U2Z IWF Z

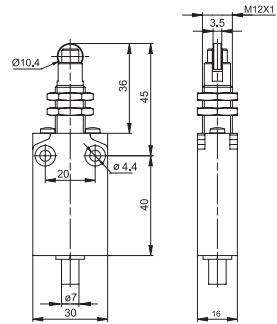


Position & Limit Switches

I49 Series - Plastic Body



I49-... RIWF



	1 NC / 1 NO Snap-action	1 NC / 1 NO Slow-action	2 NC Slow-action	2 NC / 2 NO Slow-action
Switching diagram				
Cable outlet right	6089167054 I49-SU1Z RIWF	6089117055 I49-U1Z RIWF		
Cable outlet below	6089167064 I49-SU1Z RIWF Z	6089117065 I49-U1Z RIWF Z	6089817072 I49-A2Z RIWF Z	6089217077 I49-U2Z RIWF Z