

C2 - Series

Small Plastic Body

Position & Limit Switches



Position & Limit Switches

C2 Series - Plastic Body



Product characteristics

- Very small dimensions
- 2 positive break contacts
- Front- and top mounting
- Different actuators

Good to know ...

The C2 position switch has the smallest possible dimensions and is therefore perfect for applications in very confined spaces.

The two contacts are positive break ones. It can therefore be used in safety applications.

Position & Limit Switches

C2 Series - Plastic Body

Technical design

- Slow- and snap action
- **Versions:** 1 NC/1 NO, 2 NC, 2 NO

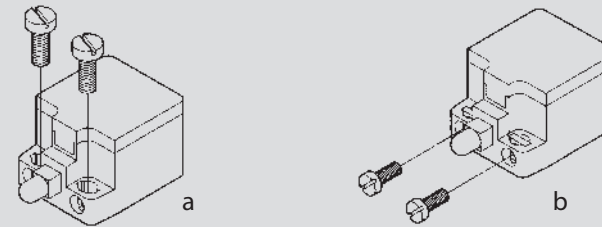
Technical data

Electrical data		
Design insulation voltage	U_i max.	250 V AC
Conventional thermoelectric current	I_{the}	10 A
Rated operating voltage	U_e max.	240 V
Utilisation category	U_e/I_e	AC-15, U_e/I_e 240 V/3 A
Short-circuit protection		Safety fuse 6 A gL/gG
Protection class		II, protective insulation
Mechanical data		
Enclosure material		Thermoplastics, glass-fibre reinforced (UL 94-V0)
Ambient temperature		-30 °C to +80 °C
Mechanical lifetime		3×10^6 switching cycles
B10d		6 million
Switching frequency		≤ 100 /min
Type of connection		Screwed connections (M3.5)
Conductor cross-sections		Single-wire 0.5 – 1.5 mm ² or strand with wire-end ferrule 0.5 – 1.5 mm ²
Cable entry		Rectangle 8.5 × 3.5 mm
Protection class		IP20 conforming to EN 60529; DIN VDE 0470 T1
Standards		
VDE 0660 T100, DIN EN 60947-1, IEC 60947-1		
VDE 0660 T200, DIN EN 60947-5-1, IEC 60947-5-1		

Mounting

Front- and top mounting (type-related)

- a) 2 × round holes for M4 screws
- b) 2 × insert nuts for front-side installation for M3 screws M3 (type-related)

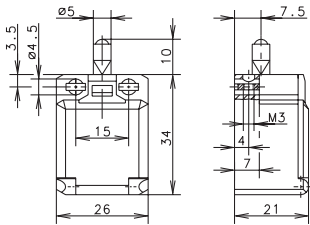


Position & Limit Switches

C2 Series - Plastic Body



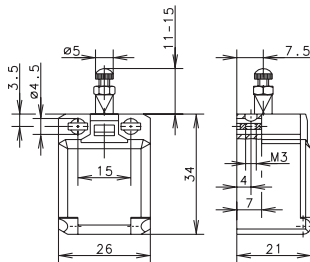
C2-... W



	1 NC / 1 NO	2 NC	2 NO
Slow-action system	6008101001 C2-U1Z 	6008801003 C2-A2Z 	6008801005 C2-E2
Snap-action system	6008351002 C2-SU1Z 	6008851004 C2-SA2Z 	6008851006 C2-SE2

Special features: on request

C2-... ST



	1 NC / 1 NO	2 NC	2 NO
Slow-action system	6008104025 C2-U1Z ST 	6008804027 C2-A2Z ST 	6008804029 C2-E2 ST
Snap-action system	6008354026 C2-SU1Z ST 		

Special feature: Actuator length adjustable with adjusting screw

Position & Limit Switches

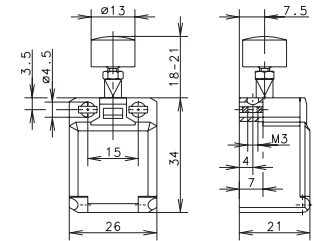
C2 Series - Plastic Body



C2... K

	1 NC / 1 NO	2 NC
Slow-action system	6008107019 C2-U1Z K 	6008807021 C2-A2Z K
Snap-action system	6008357020 C2-SU1Z K 	6008857022 C2-SA2Z K

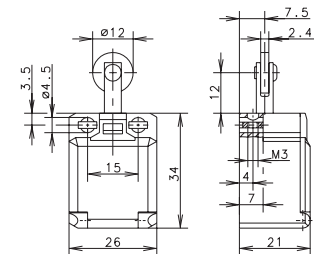
Special feature: Button actuator, for manual operation



C2... R

	1 NC / 1 NO	2 NC	2 NO
Slow-action system	6008116013 C2-U1Z R 	6008816015 C2-A2Z R 	6008816017 C2-E2 R
Snap-action system	6008366014 C2-SU1Z R 	6008866016 C2-SA2Z R 	

Special feature: on request, also available with the roller turned by 90°



Position & Limit Switches

C2 Series - Plastic Body

C2-... O.M.

Replacement actuator: 3910190259

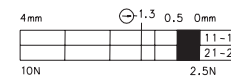
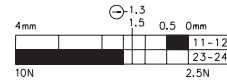


	1 NC / 1 NO	2 NC
--	-------------	------

Slow-action system

6008101007 + 3910190259
C2-U1Z O.M.

6008801009 + 3910190259
C2-A2Z O.M.



Snap-action system

6008351008 + 3910190259
C2-SU1Z O.M.



Special features: on request

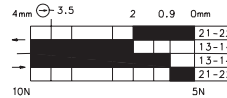
C2-... BISTABIL O.M.



	1 NC / 1 NO
--	-------------

Snap-action system

6108351008
C2-SU1Z BISTABIL O.M.



Special features: bistable characteristics, the actuator must be returned to the initial position by external actuation (pulling); actuator length adjustable with M3 adjusting screw

