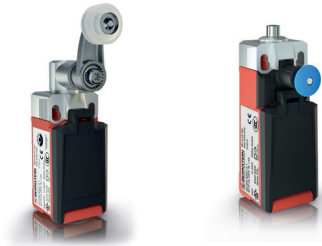


Altech Corp.® IN Modular Limit Switches

by  BERNSTEIN



Advantages

- Metal mounting and actuators components offer the benefits of a metal switch at plastic switch prices
- Actuators can be changed or adjusted without tools
- Modular switch bodies, contact blocks and actuators allow better utilization of stock
- Protection Class IP67
- Highly reliable at low current switching (1 mA)
- Mechanical service life up to 30 million switching cycles

Easy to assemble components all sold separately.

Housings

(Without Actuator or Contact Block)



608.3000.248
M20 SWITCH BODY



608.3000.252
LATCHING SWITCH BODY
WITH RESET BUTTON

Contact Blocks

(snaps into housing without tools)



1NC/1NO Slow Action	600.5101.156 C14-EB U1Z
------------------------	----------------------------

1NC/1NO Snap Action	600.5151.157 C14-EB SU1Z
------------------------	-----------------------------

2NC Slow Action	600.5801.159 C14-EB A2
--------------------	---------------------------

Actuators

(Mounts into switch body without Tools)

PLUNGER



391.8052.341
SM Actuator

ROLLER PLUNGER



391.8172.342
RK Actuator

ROLLER LEVER



391.8202.343
HK Actuator

SIDE MOUNT ROLLER LEVER



391.8352.345
AHK Actuator

SWIVEL POINT LEVER



391.8202.344
DGHK Actuator

SWIVEL KNEE LEVER



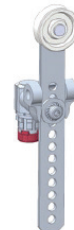
391.8202.348
DGKK Actuator

SIDE MOUNTED ROLLER



391.8352.359
AGSGU RO50 Actuator

ADJUSTABLE HEIGHT ROLLER

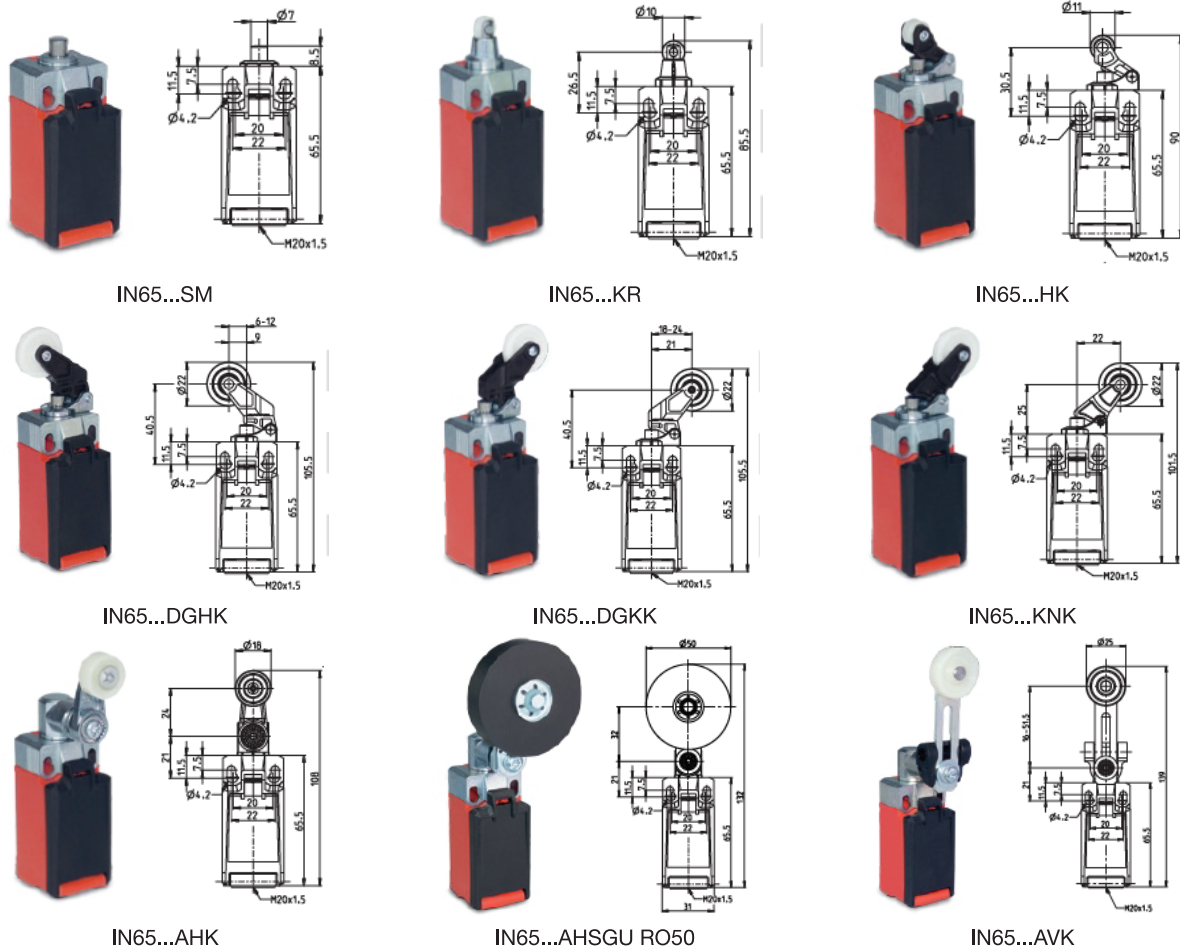


391.8362.358
AVK Actuator

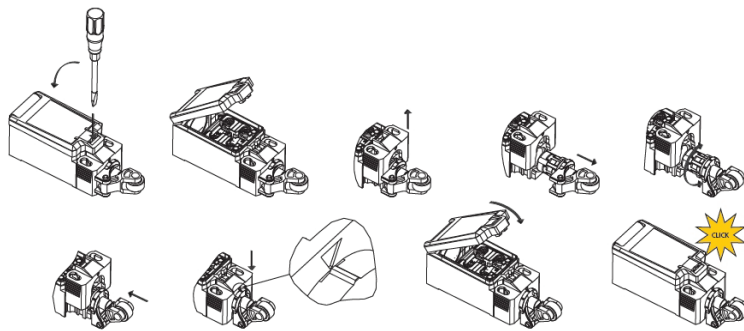
IN Modular Limit Switches



Dimensions



Actuator Installation & Rotation



Technical Information

Rated operating voltage	240VAC / 24VDC
Conv. thermal current	5 A
Minimum current	1 mA
Rated AC frequency	50/60 Hz
Utilization category	AC15, Ue/Ie 240V/1.5A DC13, Ue/Ie 24V/1.5A
Conductor sizes	22AWG - 16AWG
Cover & Enclosure	Thermoplastic (UL94-V0)
Operating temperature	-30°C...+75°C
Protection rating	IP66 / IP67 acc. EN60529
Contact material	Silver
B10d N.C.	30x10 ⁶ cycles Tbd (check acc. to DIN EN 6-947-5-1)
B10d N.O	1x10 ⁶ cycles (Tbd contact with reduced power use for resistive load).

Learn More @

www.altechcorp.com/bernstein/LimitSwitches.html

Altech Corporation
35 Royal Road
Flemington, NJ 08822-6000
P 908.806.9400 • F 908.806.9490
www.altechcorp.com

Altech Corp.® 580-2000
Printed November 2015