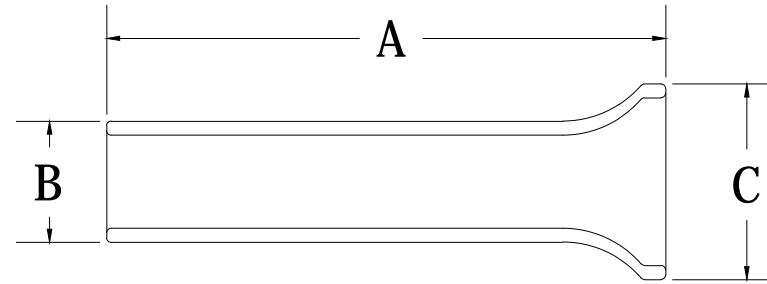


REVISIONS FOR DWG # F0601

REV	CH.NO.	DESCRIPTION	DATE	REVISED BY
-	-	ORIGINAL DESIGN	06/10/16	ARON G



AWG	mm ²	Cat. No.	Barrel Length	A	B	C
6	16	2391.0	12	12	6.2	7.5
6	16	2392.0	15	15	6.2	7.5
6	16	2393.0	18	18	6.2	7.5
4	25	2394.0	15	15	7.7	9.5
4	25	2395.0	18	18	7.7	9.5
2	35	2396.0	18	18	8.7	11
1	50	2816.0	32	32	10.9	13
2/0	70	2790.0	25	25	13.3	15
3/0	95	2791.0	32	32	15.3	17
4/0	120	2792.0	32	32	17.5	19
250MCM	150	2793.0	32	32	19.5	21
350MCM	185	2815.0	32	32	21.2	23.5
500MCM	240	2815.5	40	40	23.0	25

UNLESS OTHERWISE SPECIFIED
 • ALL DIMENSIONS ARE IN MILLIMETERS
 • THIRD ANGLE PROJECTION

• TOLERANCE

XX	∅	1.00 mm
XX.X	∅	0.50 mm
XX.XX	∅	0.20 mm
ALL	∅	XX mm

CIRTEM

This Drawing is the property of

Altrech Corp.

35 Royal Road
 Flemington NJ 08822-6000
 (908) 806-9400 • Fax (908) 806-9490

AND IS A CONFIDENTIAL DISCLOSURE
 LENT WITHOUT CONSIDERATION OTHER
 THAN THE BORROWER'S AGREEMENT
 THAT IT SHALL NOT BE REPRODUCED,
 COPIED, LENT, OR DISPOSED OF
 DIRECTLY OR INDIRECTLY NOR USED
 FOR ANY PURPOSE OTHER THAN THAT
 FOR WHICH IT IS SPECIFICALLY
 FURNISHED.

TITLE: Uninsulated Ferrules
 6AWG to 1AWG

DRAWN BY: Aron Gyorgypal	06/10/16	DRAWING NO.:	REV.:
CHECKED BY: Morgan E	06/10/16	M-Cad-6FU-F0601	-
RELEASED BY: Laszlo G	06/10/16	SCALE: -	SHEET: 1 OF: 1