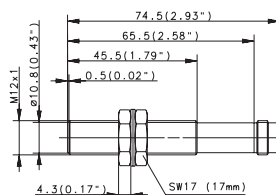
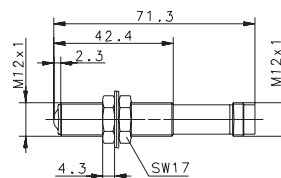
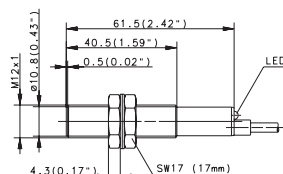
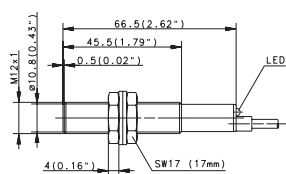


Optoelectronic Sensors (Type M12, M18)

Type	M12	M12	M12	M12
Operating mode	Diffuse-reflection sensor Type D	Diffuse-reflection sensor Type D	Diffuse-reflection sensor Type D	Through-beam sensor Type T
Sensing range	60 mm	60 mm	60 mm	6 m
Type of connection	Cable 2 m	Cable 2 m	Connector M12	Connector M12
Special feature				



PNP	Light activated Type Dark activated Programmable Type	6557928002 OM12RT-DHTP-0060-CL	6557930002 OT12RT-DHTP-0060-CL	6557929002 OT12RT-DHTP-0060-S		
NPN	Light activated Dark activated Programmable					
Transmitter	Type				6551029001 OT12SE-DOOS-06.0-S	
Relay output						
NAMUR						
Analogue	Current output Voltage output					
2-wire	DC AC					

Technical data

Rated operating voltage	U_B	10–36 VDC	10–36 VDC	10–36 VDC	10–36 VDC
Rated operating current	I_B	50 mA	50 mA	50 mA	50 mA
Switching frequency (max)	F	> 100 Hz	> 100 Hz	> 100 Hz	> 100 Hz
Short circuit-protection		Cyclic	Cyclic	Cyclic	Cyclic
Function/operating voltage indicator		LED/-	LED/-	-/-	-/-
Sensitivity adjustable		-	-	-	-
Teachable					
Timer function					
Diagnostic function					
Type of light		IR 880 nm	IR 880 nm	IR 880 nm	IR 880 nm

Mechanical data

Ambient temperature (min/max)		-20°C/+70°C	-20°C/+70°C	-20°C/+70°C	-20°C/+70°C
Protection class in accordance with IEC 529, EN 60529		IP67	IP67	IP67	IP67
Enclosure material		CuZn39Pb3	PA	PA	PA, red
Connection		3 x 0.14 mm ²	3 x 0.14 mm ²	M12 x 1	M12 x 1

Please refer to Accessories for reflectors, mounting brackets, cable couplers and sensor tester.

