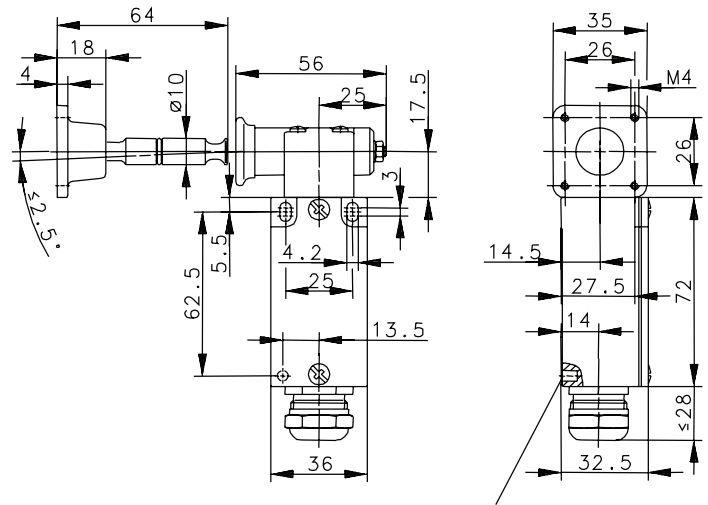
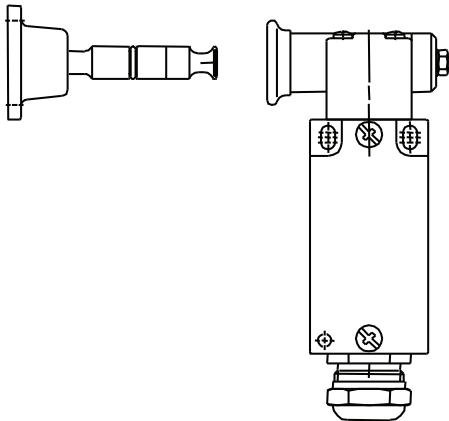


GC Series - Metal Body with Cylindrical Actuator



Blind hole for fitted pin
Ø4 ; 5.5 deep

Metal Cylindrical Pivoting Actuator provides greater radius access and less problems with misalignment. Features all metal body, head and actuator.



Technical data

Electrical data		
Rated insulation voltage	U_i	400 V AC
Conventional thermal current (up to) ¹	I_{the}	10 A
Rated operating voltage	U_e	240 V
Utilization category (up to) ¹		AC-15, U_e / I_e 240 V / 3 A
Forced disconnection	p	conforming to IEC/EN 60947-5-1 Addendum K
Short-circuit protection (up to) ¹		Fuse 10 A gL/gG
Protection class		

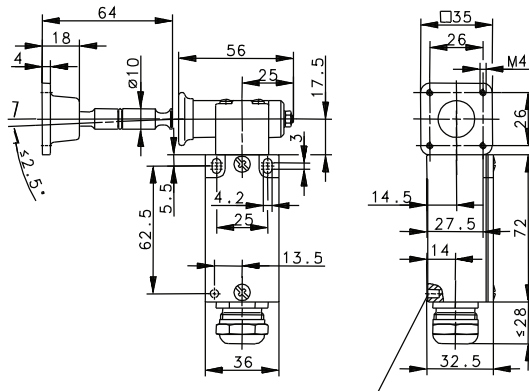
Mechanical data	
Enclosure	Aluminum pressure die-casting
Cover	Sheet aluminum
Actuation	Separate actuator
Ambient temperature	-30°C to +80°C
Mechanical service life	1 x 10 ⁶ switching cycles
B10d	2 mill.
Switching frequency	≤ 10/min.
Mounting	2 x M4
Type of connection	Screw connections
Conductor cross sections	Single-wire 0.5 - 1.5 mm ded wire with ferrule 0.5 - 1.5 mm
Cable entry	1 x M20 x 1.5
Weight	≈ 0.32 kg
Installation position	Any
Protection class	IP65 conforming to EN 60529

Standards	
VDE 0660 T100, DIN EN 60947-1, IEC 60947-1	
VDE 0660 T200, DIN EN 60947-5-1, IEC 60947-5-1	

¹ Depending on switching system

GC-VT Series

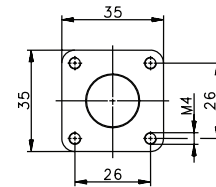
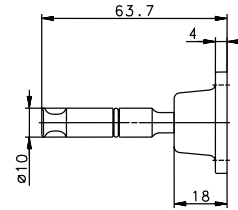
GC-VT

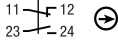
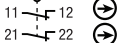


Blind hole for fitted pin
Ø4; 5,5 deep

Replacement actuator keys:

VT ACTUATOR KEY
391.2001.275



Switching Operation	Slow Action	High Activation Force	Radius Activation
1 NC / 1 NO Contacts	612.1100.555 GC-U1Z VT 90 GR 	-	-
1 NC Contacts	-	-	-
2 NC Contacts	611.6769.064 GC-AZZ VT 90 GR 	-	-
2 NC / 1 NO Contacts Overlapping	-	-	-

Technical Information

	Slow Action	High Activation Force	Radius Activation
Maximum Switching Voltage	240V		
Max. Switching Amps (up to)*	10A		
B10d (up to)*	20 Million		
Mechanical Service Life (up to)*	10 x 10 ⁶		
Switching Frequency	≤ 30/min		
Operating Temperature	-30 °C to +80 °C		
Protection Rating	IP65		
Utilization Category (up to)*	AC-15, Ue/Ue 240V 3A		
Rate Insulation Voltage	400VAC		

Approvals



* Depending on switching system - see technical information for details