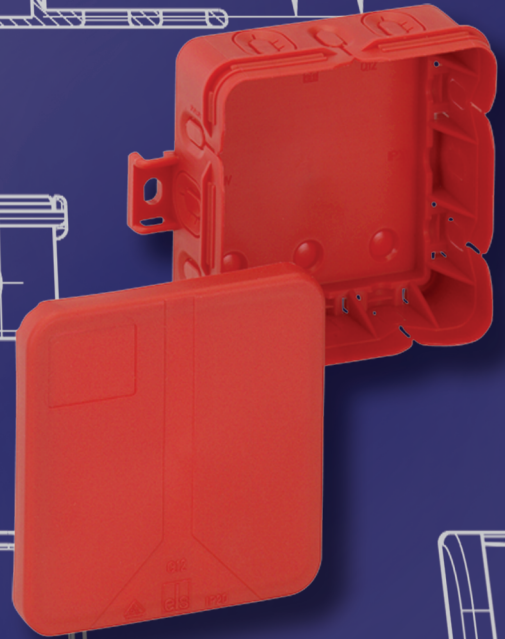
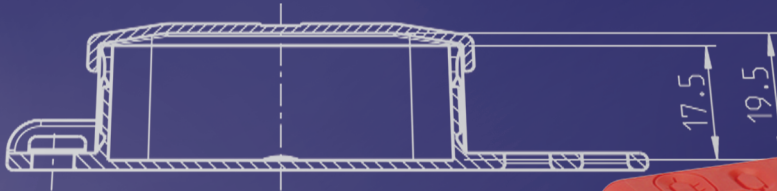


# Altech Corp.®

Serving the Automation & Control Industry since 1984



## Q Series

The Low Voltage  
Wire Management Solution

els spelsberg

Industrial Enclosures

22.5

67

91

49

11

φ6

012

els

1222

11

11

11

11

11

11

11

11

11

11

11

11

11

11

11

11

11

11

11

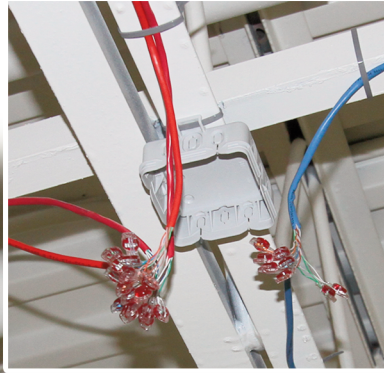
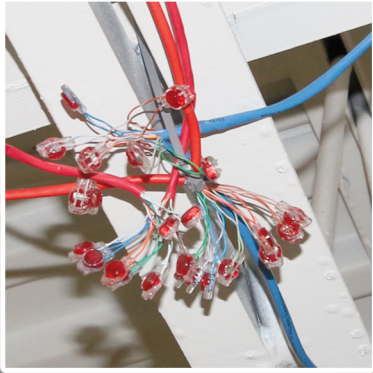
11

11

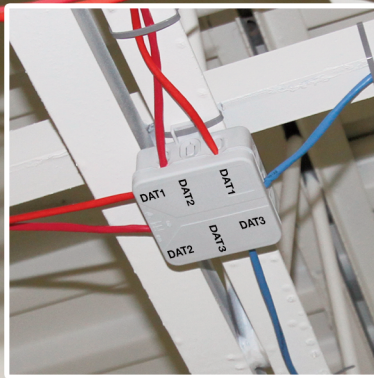
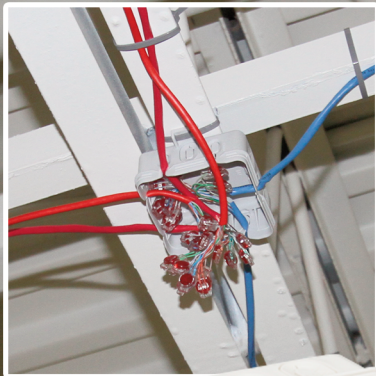


# The Q Series Low Voltage Wire Management Solution

**Your competition left this mess.**



**Q 12-SB-L**



**You cleaned it up without having to cut and resplice.**



**Q 12-L**



**Q 4-L**

Using the Q Series data & signal wiring enclosure is fast and easy. Even if the splicing mess already exists. Simply mount the polypropylene enclosure using its convenient mounting ears with a screw or zip strap. Then press the wires into the Q Series unique retaining slots and snap on the cover and your done.

Available sizes:

Q 4-L – Polypropylene – 56 x 40 x 23 mm (2.20 x 1.57 x 0.91 in.)

Q 12-L – Polypropylene – 85 x 85 x 37 mm (3.35 x 3.35 x 1.46 in.)

Q 12 SB-L – Polypropylene – 85 x 85 x 37 mm (3.35 x 3.35 x 1.46 in.)

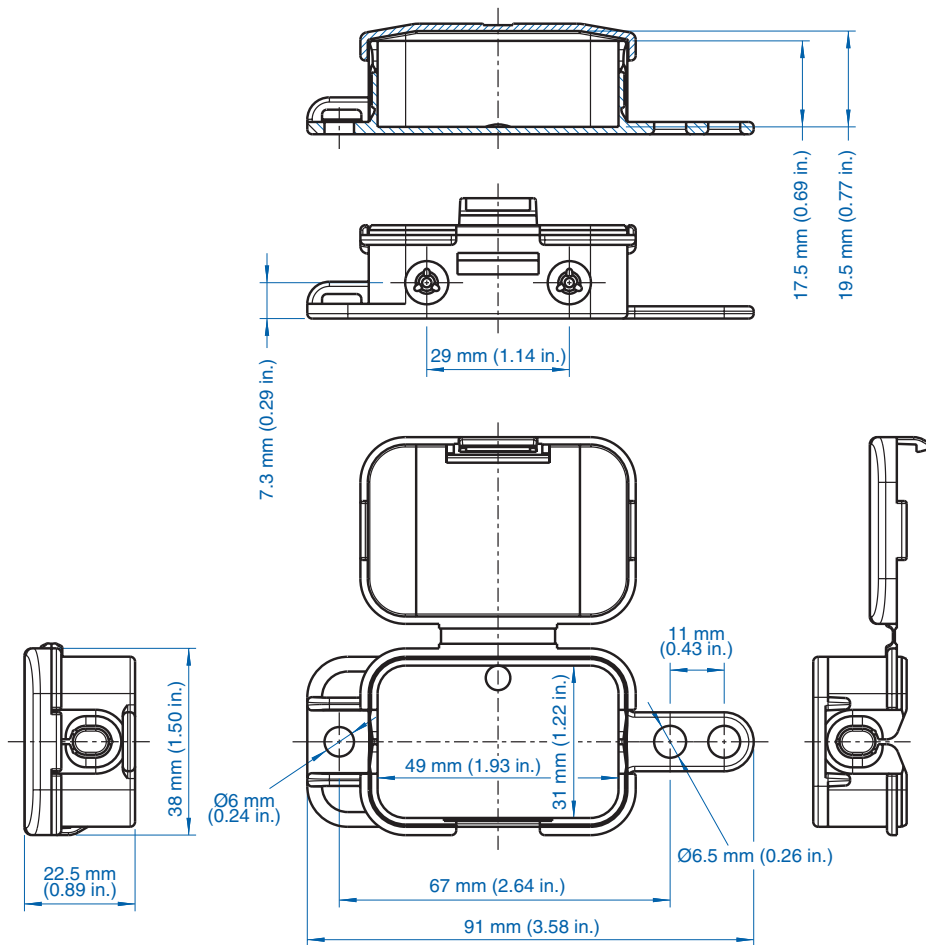
**Standard Features**

- **Protection Level:** IP20
- **Technical:** 4 wire entry points (2 with press in wire entries)  
Integral mounting flange  
Hinged snap closure cover
- **Enclosure Material:** Semi-Rigid Polypropylene
- **Material**  
**Temperature Range:** -30°C to 100°C (-22°F to 212°F)
- **Color:** Light Gray



**Q4**

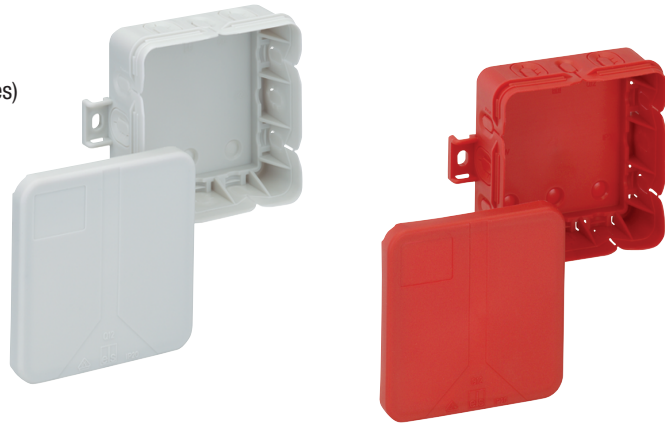
Ordering Information	Cat. No.	Type	Length	Dimensions mm (in) Width	Height	Std. Pk.
Enclosure	334-904-01	Q4-L	56 mm (2.20 in)	40 mm (1.57 in)	23 mm (0.91 in)	1



# Q 12-L – Polypropylene – 85 x 85 x 37 mm (3.35 x 3.35 x 1.46 in.)

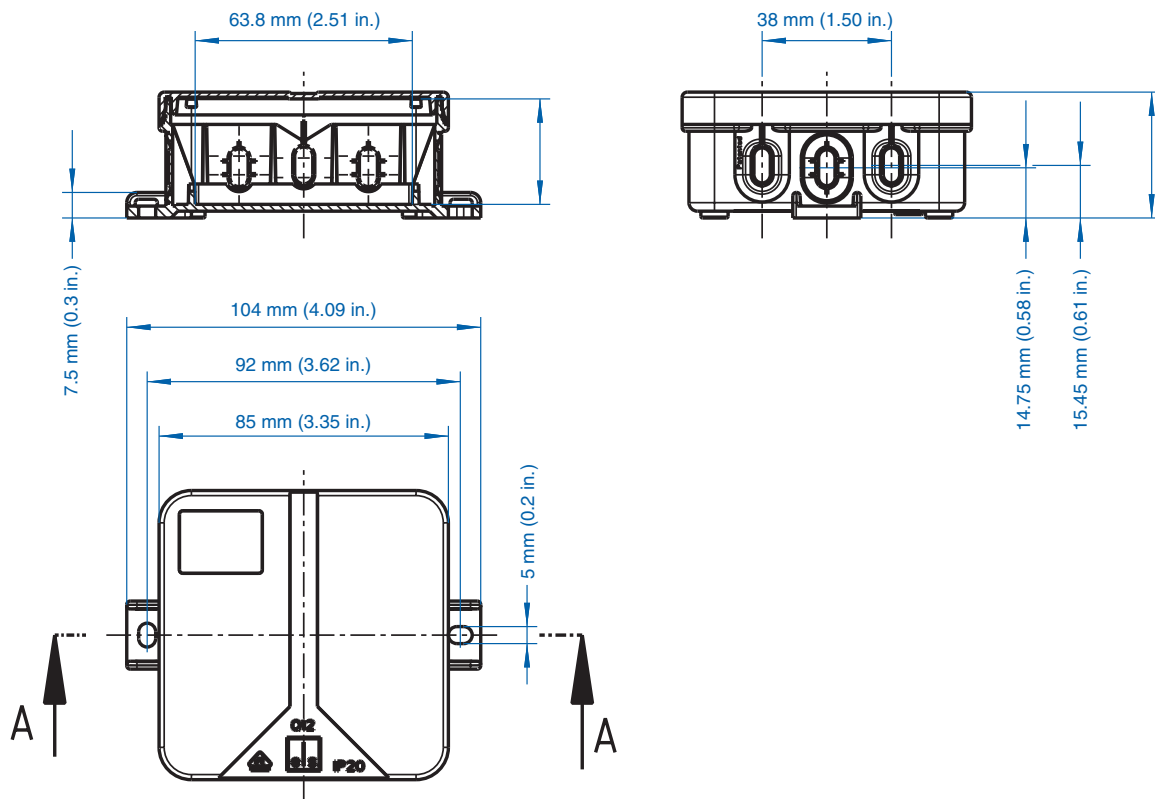
## Standard Features

- **Protection Level:** IP20
- **Technical:** 12 wire entry points (7 with press in wire entries)  
3 wire entries in base  
Integral mounting flanges  
Snap on cover
- **Enclosure Material:** Semi-Rigid Polypropylene
- **Material**
- **Temperature Range:** -30°C to 100°C (-22°F to 212°F)
- **Color:** Light Gray



## Q12

Ordering Information	Cat. No.	Type	Length	Dimensions mm (in)		Std. Pk.
				Width	Height	
Enclosure - gray	334-912-01	Q 12-L	85 mm (3.35 in)	85 mm (3.35 in)	37 mm (1.46 in)	1
Enclosure - red	334-712-01	Q 12SB-L	85 mm (3.35 in)	85 mm (3.35 in)	37 mm (1.46 in)	1



Contact Altech or  
one of our valued Distributors