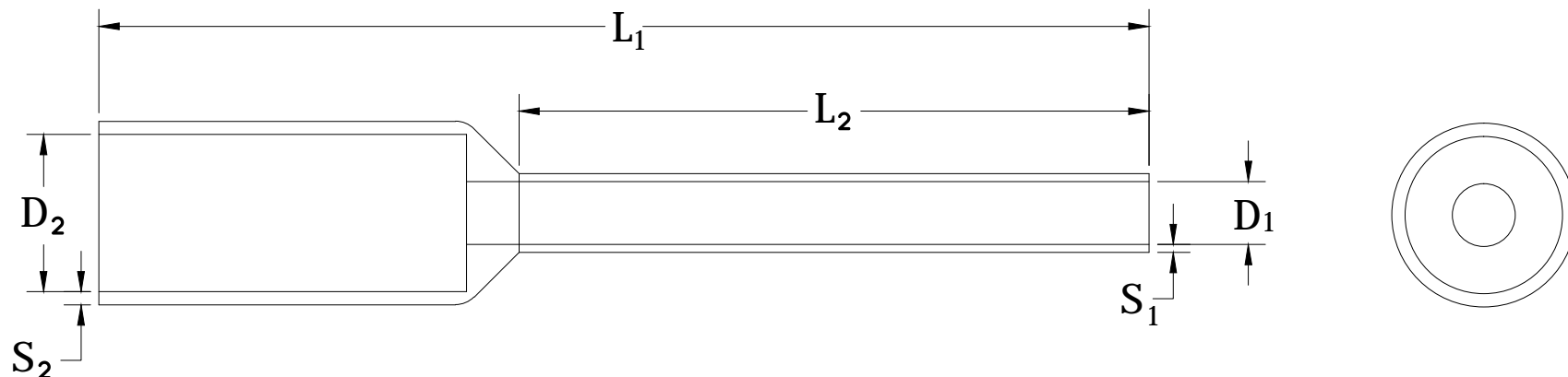


REVISIONS FOR DWG # FI2620

REV	CH.NO.	DESCRIPTION	DATE	REVISED BY
-	-	ORIGINAL DESIGN	06/08/16	ARON G



AWG	mm <sup>2</sup>	Barrel Length	Industry Standard		DIN Standard		L	L <sub>2</sub>	D	S	D <sub>2</sub>	S <sub>2</sub>
26	0.1400	6	FII2606	2620.0	-	-	10	6	0.6000	0.1500	1.5000	0.2500
26	0.1400	8	FII2608	2621.0	-	-	12	8	0.6000	0.1500	1.8000	0.2500
24	0.2500	6	FII2406		-	-	10	6	0.8500	0.1500	1.8000	0.2500
24	0.2500	8	FII2408		-	-	12	8	0.8500	0.1500	1.8000	0.2500
24	0.2500	12	FII2412		-	-	16	12	0.8500	0.1500	1.8000	0.2500
22	0.3400	6	FII2206	2622.0	-	-	10	6	0.8500	0.1500	2	0.2500
22	0.3400	8	FII2208	2623.0	-	-	12	8	0.8500	0.1500	2	0.2500
22	0.3400	12	FII2212		-	-	16	12	0.8500	0.1500	2	0.2500
20	0.5000	6	FII2006	2397.0	FID2006	2863.0	12	6	1	0.1500	2.6000	0.2500
20	0.5000	8	FII2008	2201.0	FID2008	2864.0	14	8	1	0.1500	2.6000	0.2500
20	0.5000	10	FII2010		FID2010	2865.0	16	10	1	0.1500	2.6000	0.2500
20	0.5000	12	FII2012		FID2012		18	12	1	0.1500	2.6000	0.2500

UNLESS OTHERWISE SPECIFIED  
 • ALL DIMENSIONS ARE IN MILLIMETERS  
 • THIRD ANGLE PROJECTION

• TOLERANCE	
XX	± 1.00 mm
XX.X	± 0.50 mm
XX.XX	± 0.20 mm
ALL	± XX mm

CIRTEK

This Drawing is the property of

**Altrech Corp.**

35 Royal Road  
 Flemington NJ 08822-6000  
 (908) 806-9400 • Fax (908) 806-9490

AND IS A CONFIDENTIAL DISCLOSURE  
 LENT WITHOUT CONSIDERATION OTHER  
 THAN THE BORROWER'S AGREEMENT  
 THAT IT SHALL NOT BE REPRODUCED,  
 COPIED, LENT, OR DISPOSED OF  
 DIRECTLY OR INDIRECTLY NOR USED  
 FOR ANY PURPOSE OTHER THAN THAT  
 FOR WHICH IT IS SPECIFICALLY  
 FURNISHED.

TITLE: Single Insulated Wire Ferrules  
 26AWG to 20AWG

DRAWN BY: Aron Gyorgypal	06/08/16	DRAWING NO.:	M-Cad-6FU-FI2620	REV.:	-
CHECKED BY: Morgan E	06/08/16	SCALE:	-	SHEET:	1 OF: 1
RELEASED BY: Laszlo G	06/09/16				